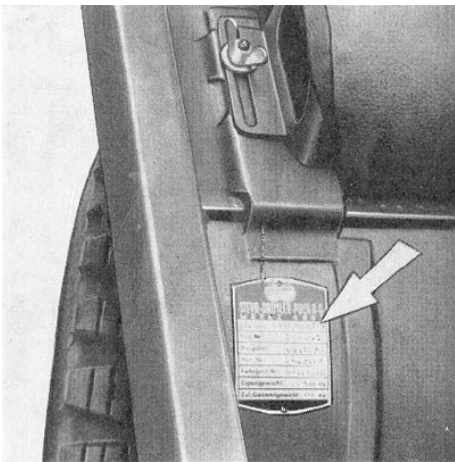
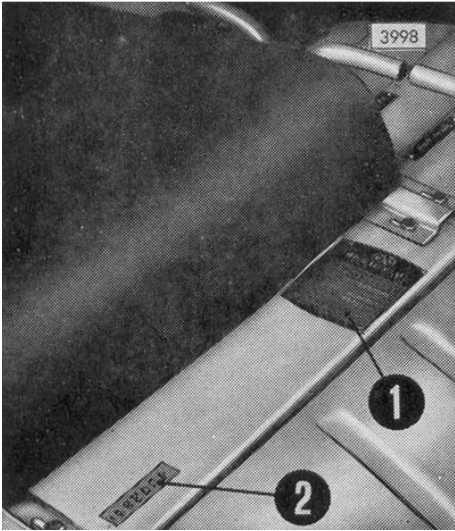


Haflinger Numbers

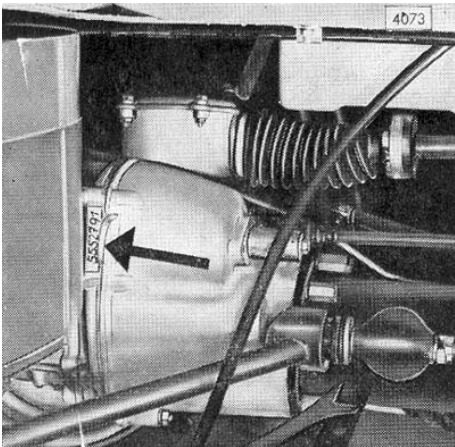
Every Haflinger has a type plate (1) in front of the right front seat that contains the following information:

- **Fzg. Nr.** (Vehicle Identification Number – VIN)
- **Baujahr** (Year – often not filled in)
- **Mot. Nr.** (Engine Number)
- **Fahrgest. Nr.** (Chassis Number)

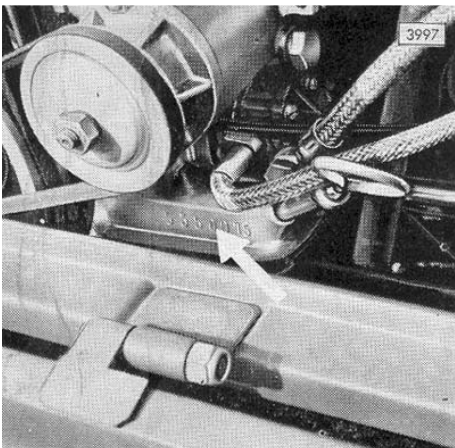
In some cases (especially military vehicles), the chassis number is also stamped directly onto the body (2).



Older Haflingers (early 60s) have the type plate mounted in a slightly different position.



The **chassis number** is also stamped onto the right side of the gearbox housing.



The **engine number** is also stamped onto the engine crankcase, close to the oil dipstick.